

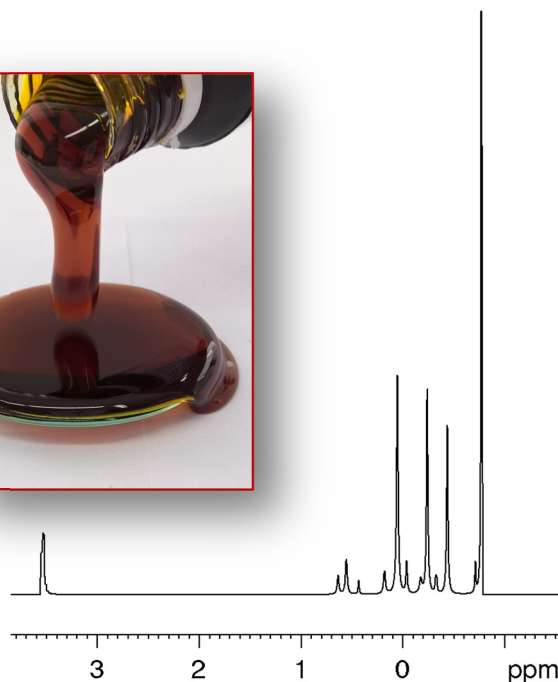
Phospholipid Analysis by ^{31}P -NMR

Ensure **product quality and compliance** with advanced ^{31}P -NMR Phospholipid Analysis !

This is the **reliable solution for accurate quantification** of all key phospholipid species in food, supplements, and raw materials.

Lecithin Sources:	Marine sources (e.g. fish, krill, mussels), plant based sources (e.g. soybean, sunflower, milk, egg, and special requests possible)
Matrices:	Powder, liquid, syrup, capsules, gummies, pellets and special requests possible
Phospholipids:	PC, 1-LPC, 2-LPC, PE, APE, LPE, PI, LPI, PG, DPG, PA, LPA, PS, LPS, SPH, DSPH

Our ^{31}P -NMR spectroscopy method detects the **phosphorus atom** present in every phospholipid molecule. As each phospholipid possesses a unique chemical signature, the technique enables **precise identification and quantification** across diverse sample types.



Our ^{31}P -NMR Analysis offers:

- ✓ Fast & accurate analysis of all major phospholipids in your product
- ✓ Officially validated methods adopted by ILPS and USP
- ✓ Versatile testing for powders, liquids, oils, capsules, gummies, and more
- ✓ Customized extraction methods for optimal signal clarity and reliability